

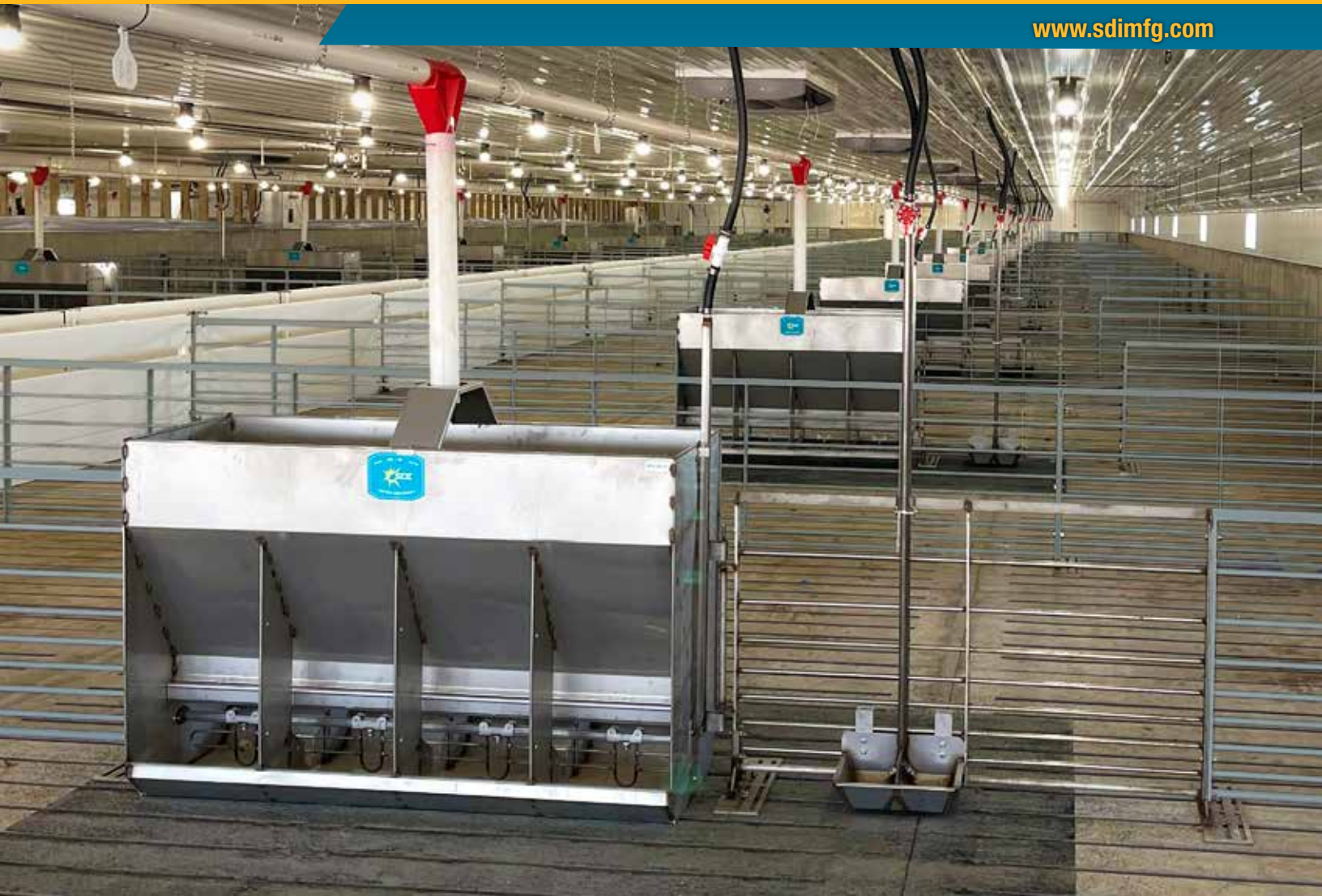
MADE IN THE USA TO PERFORM AND LAST



# EQUIPMENT SOLUTION CATALOG

VOLUME 5

[www.sdimfg.com](http://www.sdimfg.com)





# SDI EQUIPMENT

QUALITY PRODUCTS

AND INNOVATIVE SOLUTIONS.

Nursery Feeders .....	3-5
Wean-to-Finish .....	6-10
Sow Feeders.....	11
Boar Feeders .....	12
Feeder Accessories .....	13
Feed System Components.....	14-15
Watering Solutions .....	16-21
Pit Fan Transitions.....	22-23
Curtain Accessories .....	24
Trim & Corner Guards.....	25
Drains & Wastewater Products .....	26
Scale Frames .....	27
Wire Mesh .....	28
Hardware .....	28-29
Nursery Flooring Accessories.....	30
Posts & Brackets .....	31
Gating.....	32-35
Stanchions .....	36
Gestation Stall .....	37
Farrowing Crate.....	38-39
Carcass Bin .....	40



# DRY NURSERY FEEDERS

## NM Series

### Features

- Option of EZ-Squeeze Adjustment, Hand Crank Adjustment, or Precision Shift Adjustment
- Traditional 6" by 6" feed spaces designed for pig comfort and accessibility
- Feed-saving lip keeps feed in the trough
- Works with pellet and milled feed applications

### Accessories

- Drop tube holders included
- Bolt-on feet available: part #22-104566

### Options

- Available as bolt together kit
- Available in single or double sided



### Dry Nursery Feeder | Traditional 6" x 6" Feed Space Double Sided (20 GA 304 SS, 31" Height, 17" Width)

Part # (EZ-Squeeze)	Part # (Hand Crank)	Part # (Precision Shift)	Trough Spaces	Length**		Feed Capacity*	
				(in)	(cm)	(lbs)	(kg)
NM18-203	NM18-203.HC	NM18-203.SA	Double 3	18.25	46	91	41
NM24-204	NM24-204.HC	NM24-204.SA	Double 4	24.25	62	121	55
NM30-205	NM30-205.HC	NM30-205.SA	Double 5	30.25	77	151	68
<b>NM36-206</b>	<b>NM36-206.HC</b>	<b>NM36-206.SA</b>	<b>Double 6</b>	<b>36.25</b>	<b>92</b>	<b>181</b>	<b>82</b>
<b>NM42-207</b>	<b>NM42-207.HC</b>	<b>NM42-207.SA</b>	<b>Double 7</b>	<b>42.25</b>	<b>107</b>	<b>212</b>	<b>96</b>
<b>NM48-208</b>	<b>NM48-208.HC</b>	<b>NM48-208.SA</b>	<b>Double 8</b>	<b>48.25</b>	<b>122</b>	<b>242</b>	<b>110</b>
NM54-209	NM54-209.HC	NM54-209.SA	Double 9	54.25	138	272	123
<b>NM60-210</b>	<b>NM60-210.HC</b>	<b>NM60-210.SA</b>	<b>Double 10</b>	<b>60.25</b>	<b>153</b>	<b>302</b>	<b>137</b>
NM66-211	NM66-211.HC	NM66-211.SA	Double 11	66.25	168	333	151
<b>NM72-212</b>	<b>NM72-212.HC</b>	<b>NM72-212.SA</b>	<b>Double 12</b>	<b>72.25</b>	<b>184</b>	<b>363</b>	<b>165</b>

\* Approximate feed capacity based on feed density of 42 lbs per cubic foot

\*\* Custom sizes available | **Standard feeders in bold**

# DRY NURSERY MAX FEEDERS

## NMX Series



SDI Nursery MAX Feeders (NMX Series) have 8" wide by 8" deep feed spaces and are constructed of 18 gauge stainless steel material. The NMX series is used to accommodate keeping pigs in the nursery to heavier weights.

### Features

- Option of EZ-Squeeze Adjustment, Hand Crank Adjustment, or Precision Shift Adjustment
- Large 8" by 8" feed space dimensions
- Feed-saving lip keeps feed in the trough
- Works with pellet and milled feed applications

### Accessories

- Drop tube holders included
- Bolt-on feet available: part #22-104567

### Options

- Available in single or double sided



### Dry Nursery MAX Feeder | Large 8" x 8" Feed Spaces

#### Double Sided (18 GA 304 SS, 31" Height, 22" Width)

Part # (EZ-Squeeze)	Part # (Hand Crank)	Part # (Precision Shift)	Trough Spaces	Length**		Feed Capacity*	
				(in)	(cm)	(lbs)	(kg)
NMX24-203	NMX24-203.HC	NMX24-203.SA	Double 3	24.25	62	161	73
NMX36-204	NMX36-204.HC	NMX36-204.SA	Double 4	36.25	92	241	109
NMX48-206	NMX48-206.HC	NMX48-206.SA	Double 6	48.25	123	322	146
NMX56-207	NMX56-207.HC	NMX56-207.SA	Double 7	56.25	143	376	171
NMX60-208	NMX60-208.HC	NMX60-208.SA	Double 8	60.25	153	403	183
NMX64-208	NMX64-208.HC	NMX64-208.SA	Double 8	64.25	163	430	195
NMX72-209	NMX72-209.HC	NMX72-209.SA	Double 9	72.25	184	483	219

\* Approximate feed capacity based on feed density of 42 lbs per cubic foot

\*\* Custom sizes available

# WET/DRY NURSERY SHELF FEEDER

## CSN Series



### Features

- Option of EZ-Squeeze Adjustment or Hand Crank Adjustment
- Edstrom nipples
- Direct-drill threaded waterline reduces the chance of leaking around the nipple
- Proper feed space dimensions designed for pig comfort and accessibility of feed
- Feed-saving lip keeps feed in the trough

### Accessories

- Drop tube holders included
- Bolt-on feet available: part #22-104570

### Options

- Available in either single or double sided models
- Also available in knock down bolt kit (ideal for long distance and international shipments)



### Wet/Dry Nursery Shelf Feeder (18 GA 304 SS, 28" Height, 18.25" Width)

Part # (EZ-Squeeze)	Part # (Hand Crank)	Trough Spaces	Length**		Feed Capacity*	
			(in)	(cm)	(lbs)	(kg)
CSN30-203	CSN30-203.HC	Double 3	30.25	77	127	58
CSN36-204	CSN36-204.HC	Double 4	36.25	92	152	69
CSN42-205	CSN42-205.HC	Double 5	42.25	107	177	80
CSN48-206	CSN48-206.HC	Double 6	48.25	123	203	92
CSN54-206	CSN54-206.HC	Double 6	54.25	123	228	103
CSN60-207	CSN60-207.HC	Double 7	60.25	153	253	115

\* Approximate feed capacity based on feed density of 42 lbs per cubic foot

\*\* Custom sizes available

# DRY WEAN-TO-FINISH FEEDERS

## WF Series



### Features

- Option of EZ-Squeeze Adjustment, Hand Crank Adjustment, or Precision Shift Adjustment
- Traditional wean-to-finish feed space dimensions (14" or more) designed for hog comfort
- Feed-saving lip keeps feed in the trough
- Works with pellet and milled feed applications

### Accessories

- Drop tube holders included
- Bolt-on feet available: part #22-104564

### Options

- Available as a bolt together kit (ideal for long distance and international shipments)
- Available in single or double sided

### With Solid Panel Dividers

- Solid panel dividers prevent pigs from seeing each other which reduces fighting and increases gains

### With V-Guard Dividers

- V-Guard dividers can be easily washed with no splash back



▲ (Solid Panel Dividers shown)

### Dry Wean-to-Finish Feeder, with Solid Panel Dividers

#### Double Sided (18 GA 304 SS, 34" Height, 25" Width)

Part # (EZ-Squeeze)	Part # (Hand Crank)	Part # (Precision Shift)	Trough Spaces	Length**		Feed Capacity*	
				(in)	(cm)	(lbs)	(kg)
WF30-222	WF30-222.HC	WF30-222.SA	2	30.25	77	277	126
<b>WF42-223</b>	<b>WF42-223.HC</b>	<b>WF42-223.SA</b>	<b>3</b>	<b>42.25</b>	<b>107</b>	<b>388</b>	<b>176</b>
<b>WF50-224</b>	<b>WF50-224.HC</b>	<b>WF50-224.SA</b>	<b>4</b>	<b>50.25</b>	<b>128</b>	<b>462</b>	<b>210</b>
<b>WF56-224</b>	<b>WF56-224.HC</b>	<b>WF56-224.SA</b>	<b>4</b>	<b>56.25</b>	<b>143</b>	<b>517</b>	<b>235</b>
<b>WF60-224</b>	<b>WF60-224.HC</b>	<b>WF60-224.SA</b>	<b>4</b>	<b>60.25</b>	<b>153</b>	<b>554</b>	<b>251</b>
<b>WF70-225</b>	<b>WF70-225.HC</b>	<b>WF70-225.SA</b>	<b>5</b>	<b>70.25</b>	<b>178</b>	<b>647</b>	<b>293</b>
WF75-226	WF75-226.HC	WF75-226.SA	6	75.25	191	693	314
WF84-226	WF84-226.HC	WF84-226.SA	6	84.25	214	776	352

### Dry Wean-to-Finish Feeder, with V-Guard Dividers

#### Double Sided (18 GA 304 SS, 34" Height, 25" Width)

Part # (EZ-Squeeze)	Part # (Hand Crank)	Part # (Precision Shift)	Trough Spaces	Length**		Feed Capacity*	
				(in)	(cm)	(lbs)	(kg)
WF30-2V3	WF30-2V3.HC	WF30-2V3.SA	2	30.25	77	277	126
<b>WF42-2V3</b>	<b>WF42-2V3.HC</b>	<b>WF42-2V3.SA</b>	<b>3</b>	<b>42.25</b>	<b>107</b>	<b>388</b>	<b>176</b>
<b>WF50-2V4</b>	<b>WF50-2V4.HC</b>	<b>WF50-2V4.SA</b>	<b>4</b>	<b>50.25</b>	<b>128</b>	<b>462</b>	<b>210</b>
<b>WF56-2V4</b>	<b>WF56-2V4.HC</b>	<b>WF56-2V4.SA</b>	<b>4</b>	<b>56.25</b>	<b>143</b>	<b>517</b>	<b>235</b>
<b>WF60-2V4</b>	<b>WF60-2V4.HC</b>	<b>WF60-2V4.SA</b>	<b>4</b>	<b>60.25</b>	<b>153</b>	<b>554</b>	<b>251</b>
<b>WF70-2V5</b>	<b>WF70-2V5.HC</b>	<b>WF70-2V5.SA</b>	<b>5</b>	<b>70.25</b>	<b>178</b>	<b>647</b>	<b>293</b>
WF75-2V6	WF75-2V6.HC	WF75-2V6.SA	6	75.25	191	693	314
WF84-2V6	WF84-2V6.HC	WF84-2V6.SA	6	84.25	214	776	352



V-Guard Dividers

\* Approximate feed capacity based on feed density of 42 lbs per cubic foot  
 \*\* Custom sizes available  
**Standard feeders in bold**

# DRY WEAN-TO-FINISH MAX FEEDERS

## MX Series

The Wean-to-Finish MAX Feeder has a 2" deeper feed trough space than the traditional Wean-to-Finish Feeder to give more head space for larger finishing pigs. The MAX Feeder is designed to provide adequate feeding space for hogs being finished at heavier weights.

### Features

- Option of EZ-Squeeze Adjustment, Hand Crank Adjustment, or Precision Shift Adjustment
- Deep feed spaces – trough is 2" deeper than traditional wean-to-finish to give more head space to large finishing pigs
- Traditional wean-to-finish feed space dimensions (14" or more) designed for hog comfort
- Solid panel or V-Guard dividers
- Feed-saving lip keeps feed in the trough
- Works with pellet and milled feed applications

### Accessories

- Drop tube holders included
- Bolt-on feet available: part #22-104565

### Options

- Available in single or double sided



▲ (Solid Panel Dividers shown)

### Dry Wean-to-Finish MAX with Solid Dividers

#### Double Sided (18 GA 304 SS, 34" Height, 30" Width)

Part # (EZ-Squeeze)	Part # (Hand Crank)	Part # (Precision Shift)	Trough Spaces	Length**		Feed Capacity*	
				(in)	(cm)	(lbs)	(kg)
MX30-222	MX30-222.HC	MX30-222.SA	2	30.25	77	277	126
MX42-223	MX42-223.HC	MX42-223.SA	3	42.25	107	388	176
<b>MX50-224</b>	<b>MX50-224.HC</b>	<b>MX50-224.SA</b>	<b>4</b>	<b>50.25</b>	<b>128</b>	<b>462</b>	<b>210</b>
MX56-224	MX56-224.HC	MX56-224.SA	4	56.25	143	517	235
<b>MX60-224</b>	<b>MX60-224.HC</b>	<b>MX60-224.SA</b>	<b>4</b>	<b>60.25</b>	<b>153</b>	<b>554</b>	<b>251</b>
<b>MX70-225</b>	<b>MX70-225.HC</b>	<b>MX70-225.SA</b>	<b>5</b>	<b>70.25</b>	<b>178</b>	<b>647</b>	<b>293</b>
MX84-226	MX84-226.HC	MX84-226.SA	6	84.25	214	776	352
MX90-226	MX90-226.HC	MX90-226.SA	6	90.25	229	832	377



### Dry Wean-to-Finish MAX with V-Guard Dividers

#### Double Sided (18 GA 304 SS, 34" Height, 30" Width)

Part # (EZ-Squeeze)	Part # (Hand Crank)	Part # (Precision Shift)	Trough Spaces	Length**		Feed Capacity*	
				(in)	(cm)	(lbs)	(kg)
MX30-2V2	MX30-2V2.HC	MX30-2V2.SA	Double 2	30.25	77	277	126
MX42-2V3	MX42-2V3.HC	MX42-2V3.SA	Double 3	42.25	107	388	176
<b>MX50-2V4</b>	<b>MX50-2V4.HC</b>	<b>MX50-2V4.SA</b>	<b>Double 4</b>	<b>50.25</b>	<b>128</b>	<b>462</b>	<b>210</b>
MX56-2V4	MX56-2V4.HC	MX56-2V4.SA	Double 4	56.25	143	517	235
<b>MX60-2V4</b>	<b>MX60-2V4.HC</b>	<b>MX60-2V4.SA</b>	<b>Double 4</b>	<b>60.25</b>	<b>153</b>	<b>554</b>	<b>251</b>
<b>MX70-2V5</b>	<b>MX70-2V5.HC</b>	<b>MX70-2V5.SA</b>	<b>Double 5</b>	<b>70.25</b>	<b>178</b>	<b>647</b>	<b>293</b>
MX84-2V6	MX84-2V6.HC	MX84-2V6.SA	Double 6	84.25	214	776	352
MX90-2V6	MX90-2V6.HC	MX90-2V6.SA	Double 6	90.25	229	832	377



V-Guard Dividers

\* Approximate feed capacity based on feed density of 42 lbs per cubic foot  
\*\* Custom sizes available  
**Standard feeders in bold**



# DRY WEAN-TO-FINISH MAX TALL FEEDERS

## MXT Series



### Features

- Option of EZ-Squeeze Adjustment, Hand Crank Adjustment, or Precision Shift Adjustment
- Deep feed spaces – trough is 2" deeper than traditional wean-to-finish to give more head space to large finishing pigs
- Traditional wean-to-finish feed space dimensions (14" or more) designed for hog comfort
- Solid panel or V-Guard dividers
- Feed-saving lip keeps feed in the trough
- Works with pellet and milled feed applications
- MXT Series offers more capacity than traditional model

### Accessories

- Drop tube holders included
- Bolt-on feet available: part #22-104565

### Options

- Available in single or double sided



▲ (Solid Panel Dividers shown)

### Dry Wean-to-Finish MAX TALL with Solid Panel Dividers

#### Double Sided (18 GA 304 SS, 40" Height, 30" Width)

Part # (EZ-Squeeze)	Part # (Hand Crank)	Part # (Precision Shift)	Trough Spaces	Length**		Feed Capacity*	
				(in)	(cm)	(lbs)	(kg)
MXT30-222	MXT30-222.HC	MXT30-222.SA	Double 2	30.25	77	390	177
MXT42-223	MXT42-223.HC	MXT42-223.SA	Double 3	42.25	107	547	248
MXT50-224	MXT50-224.HC	MXT50-224.SA	Double 4	50.25	128	651	295
MXT56-224	MXT56-224.HC	MXT56-224.SA	Double 4	56.25	143	729	331
<b>MXT60-224</b>	<b>MXT60-224.HC</b>	<b>MXT60-224.SA</b>	<b>Double 4</b>	<b>60.25</b>	<b>153</b>	<b>781</b>	<b>354</b>
<b>MXT70-225</b>	<b>MXT70-225.HC</b>	<b>MXT70-225.SA</b>	<b>Double 5</b>	<b>70.25</b>	<b>178</b>	<b>911</b>	<b>413</b>
MXT84-226	MXT84-226.HC	MXT84-226.SA	Double 6	84.25	214	1094	496
MXT90-226	MXT90-226.HC	MXT90-226.SA	Double 6	90.25	229	1172	532



V-Guard Dividers

### Dry Wean-to-Finish MAX TALL with V-Guard Dividers

#### Double Sided (18 GA 304 SS, 40" Height, 30" Width)

Part # (EZ-Squeeze)	Part # (Hand Crank)	Part # (Precision Shift)	Trough Spaces	Length**		Feed Capacity*	
				(in)	(cm)	(lbs)	(kg)
MXT30-2V2	MXT30-2V2.HC	MXT30-2V2.SA	Double 2	30.25	77	390	177
MXT42-2V3	MXT42-2V3.HC	MXT42-2V3.SA	Double 3	42.25	107	547	248
MXT50-2V4	MXT50-2V4.HC	MXT50-2V4.SA	Double 4	50.25	128	651	295
MXT56-2V4	MXT56-2V4.HC	MXT56-2V4.SA	Double 4	56.25	143	729	331
<b>MXT60-2V4</b>	<b>MXT60-2V4.HC</b>	<b>MXT60-2V4.SA</b>	<b>Double 4</b>	<b>60.25</b>	<b>153</b>	<b>781</b>	<b>354</b>
<b>MXT70-2V5</b>	<b>MXT70-2V5.HC</b>	<b>MXT70-2V5.SA</b>	<b>Double 5</b>	<b>70.25</b>	<b>178</b>	<b>911</b>	<b>413</b>
MXT84-2V6	MXT84-2V6.HC	MXT84-2V6.SA	Double 6	84.25	214	1094	496
MXT90-2V6	MXT90-2V6.HC	MXT90-2V6.SA	Double 6	90.25	229	1172	532

\* Approximate feed capacity based on feed density of 42 lbs per cubic foot

\*\* Custom sizes available  
Standard feeders in bold



# WET/DRY WEAN-TO-FINISH SHELF FEEDER

## CSW Series



### Features

- Option of EZ-Squeeze Adjustment, Hand Crank Adjustment, or Precision Shift Adjustment
- Edstrom nipples
- Direct-drill threaded waterline reduces the chance of leaking around the nipple
- Large feed space dimensions (14" or more)
- Designed for hog comfort and accessibility of feed
- Feed-saving lip keeps feed in the trough

### Accessories

- Drop tube holders included
- Bolt-on feet available: part #22-104534

### Options

- Available in either single or double sided models
- Available in two sizes – standard 31" height or XT 40" height
- Also available as knock down bolt kit (ideal for long distance and international shipments)



### Wet/Dry Wean-to-Finish Shelf Feeder (16 GA 304 SS, Traditional 31" Height, 22" Width)

Part # (EZ-Squeeze)	Part # (Hand Crank)	Part # (Precision Shift)	Trough Spaces	Length**		Feed Capacity*	
				(in)	(cm)	(lbs)	(kg)
<b>CSW30-202</b>	<b>CSW30-202.HC</b>	<b>CSW30-202.SA</b>	<b>Double 2</b>	<b>30.25</b>	<b>77</b>	<b>164</b>	<b>74</b>
<b>CSW36-203</b>	<b>CSW36-203.HC</b>	<b>CSW36-203.SA</b>	<b>Double 3</b>	<b>36.25</b>	<b>92</b>	<b>197</b>	<b>89</b>
CSW42-203	CSW42-203.HC	CSW42-203.SA	Double 3	42.25	107	229	104
<b>CSW48-203</b>	<b>CSW48-203.HC</b>	<b>CSW48-203.SA</b>	<b>Double 3</b>	<b>48.25</b>	<b>123</b>	<b>262</b>	<b>119</b>
CSW56-204	CSW56-204.HC	CSW56-204.SA	Double 4	60.25	143	306	139
<b>CSW60-204</b>	<b>CSW60-204.HC</b>	<b>CSW60-204.SA</b>	<b>Double 4</b>	<b>60.25</b>	<b>153</b>	<b>328</b>	<b>149</b>
<b>CSW72-205</b>	<b>CSW72-205.HC</b>	<b>CSW72-205.SA</b>	<b>Double 5</b>	<b>72.25</b>	<b>184</b>	<b>393</b>	<b>178</b>
<b>CSW84-206</b>	<b>CSW84-206.HC</b>	<b>CSW84-206.SA</b>	<b>Double 6</b>	<b>84.25</b>	<b>214</b>	<b>459</b>	<b>208</b>



### Wet/Dry Wean-to-Finish Shelf Feeder (16 GA 304 SS, Extra Tall 40" Height, 22" Width)

Part # (EZ-Squeeze)	Part # (Hand Crank)	Part # (Precision Shift)	Trough Spaces	Length**		Feed Capacity*	
				(in)	(cm)	(lbs)	(kg)
<b>CSW30XT-202</b>	<b>CSW30XT-202.HC</b>	<b>CSW30XT-202.SA</b>	<b>Double 2</b>	<b>30.25</b>	<b>77</b>	<b>315</b>	<b>143</b>
<b>CSW36XT-203</b>	<b>CSW36XT-203.HC</b>	<b>CSW36XT-203.SA</b>	<b>Double 3</b>	<b>36.25</b>	<b>92</b>	<b>378</b>	<b>171</b>
CSW42XT-203	CSW42XT-203.HC	CSW42XT-203.SA	Double 3	42.25	107	441	200
<b>CSW48XT-203</b>	<b>CSW48XT-203.HC</b>	<b>CSW48XT-203.SA</b>	<b>Double 3</b>	<b>48.25</b>	<b>123</b>	<b>504</b>	<b>229</b>
CSW56XT-204	CSW56XT-204.HC	CSW56XT-204.SA	Double 4	56.25	143	588	267
<b>CSW60XT-204</b>	<b>CSW60XT-204.HC</b>	<b>CSW60XT-204.SA</b>	<b>Double 4</b>	<b>60.25</b>	<b>153</b>	<b>630</b>	<b>286</b>
<b>CSW72XT-205</b>	<b>CSW72XT-205.HC</b>	<b>CSW72XT-205.SA</b>	<b>Double 5</b>	<b>72.25</b>	<b>184</b>	<b>756</b>	<b>343</b>
<b>CSW84XT-206</b>	<b>CSW84XT-206.HC</b>	<b>CSW84XT-206.SA</b>	<b>Double 6</b>	<b>84.25</b>	<b>214</b>	<b>882</b>	<b>400</b>

\* Approximate feed capacity based on feed density of 42 lbs per cubic foot  
 \*\* Custom sizes available  
 Standard feeders in bold

# WET/DRY SHUT-OFF FEEDER

## Optional on CSW XT Series



SDI's one-handed shut off feed system allows the operator to independently shut off feed to one side of the feed shelf while still allowing the other side to operate.

### Features

- Allows operator to shut off feed to either one side or both sides
- Growers can close feeders before loading pigs for market
- Ideal for sick pen layouts
- EZ-Squeeze Adjustment or Hand Crank Adjustment
- Edstrom nipples
- Direct-drill threaded waterline reduces the chance of leaking around the nipple
- Feed-saving lip keeps feed in the trough

### Accessories

- Drop tube holders included
- Bolt-on feet available: part #22-104534



### Wet/Dry Shut-off Feeder

(16 GA 304 SS, Extra Tall 40" Height, 22" Width)

Part # (EZ-Squeeze)	Part # (Hand Crank)	Trough Spaces	Length		Feed Capacity	
			(in)	(cm)	(lbs)	(kg)
CSW30XT-202.SO	CSW30XT-202.SO.HC	2	30.25	77	164	74
CSW48XT-203.SO	CSW48XT-203.SO.HC	3	48.25	123	262	119
CSW60XT-204.SO	CSW60XT-204.SO.HC	4	60.25	153	328	149

\* Approximate feed capacity based on feed density of 42 lbs per cubic foot



## SOW FEEDERS

### SF Series

SDI's industry-leading SF-015 provides better feed consistency to the lactating sow. SDI's sow feeder with PVC tube and Hand Crank Adjustment are a low maintenance solution while minimizing feed waste and spoilage. The Hand Crank Adjustment indicator allows users the ability to easily adjust how fast feed goes into the feeder. Low maintenance sow feeders allow your team more time caring for the pigs.

#### Features

- Heavy duty 16 gauge, 304 stainless steel
- Sloped bottom – keep more feed accessible to the sow
- Available in 14" and 16" widths
- Available as left or right hand
- Hand Crank Adjustment with indicator
- Several feeders available
- Custom designs available



Enlarged to show detail



SF-015

## SOW FEEDERS



SF-039

Sow Feeder, compatible with SDF001



SF-0SM

Sow Feed Bowl



SF-047

Wet/Dry Sow Feeder with feed hopper and shelf



SFD001

Sow Feed Dispenser

# DRY BOAR FEEDERS

## BF Series



### Features

- Heavy duty 16 gauge material – for use with large hogs
- Option of EZ-Squeeze Adjustment or Hand Crank Adjustment
- Deep feed spaces and 40" height
- Solid panel dividers prevent pigs from seeing each other
- Large feed space dimensions – designed for hog comfort and accessibility of feed
- Feed-saving lip keeps feed in the trough

### Accessories

- Drop tube holders included
- Bolt-on feet available: part #22-104565

### Options

- Available in either single or double sided



### Single Sided

(16 GA 304 SS, 40" Height, 18" Width)

Part # (EZ-Squeeze)	Part # (Hand Crank)	Trough Spaces	Length**		Feed Capacity*	
			(in)	(cm)	(lbs)	(kg)
BF16-121	BF16-121.HC	1	16.25	41	148	67
BF30-122	BF30-122.HC	2	30.25	77	277	126
BF32-122	BF32-122.HC	2	32.25	82	296	134
BF48-123	BF48-123.HC	3	48.25	123	444	201
BF60-124	BF60-124.HC	4	60.25	153	554	251

### Double Sided

(16 GA 304 SS, 40" Height, 30" Width)

Part # (EZ-Squeeze)	Part # (Hand Crank)	Trough Spaces	Length**		Feed Capacity*	
			(in)	(cm)	(lbs)	(kg)
BF16-221	BF16-221.HC	1	16.25	41	208	94
BF30-222	BF30-222.HC	2	30.25	77	390	177
BF32-222	BF32-222.HC	2	32.25	82	417	189
BF48-223	BF48-223.HC	3	48.25	123	625	284
BF60-224	BF60-224.HC	4	60.25	153	781	354

\* Approximate feed capacity based on feed density of 42 lbs per cubic foot

\*\* Custom sizes available





# FEEDER ACCESSORIES

## FEEDER ADJUSTMENTS



**FA-00066 (EZ-100)**  
EZ-Squeeze Adjustment panel, fully assembled (for nursery dry feeders)



**FA-00056 (EZ-150)**  
EZ Squeeze Adjustment panel for central shelf feeders, double sided



**PP-00003**  
Crank adjust



**FA-00060**  
EZ-Squeeze 101 Adjustment for dry feeders



**FA-00099**  
Precision Shift Adjustment for dry feeder



**FA-00081**  
Precision Shift Adjustment for wet/dry feeder

## ADJUSTMENT ROD/STRAP AND DIVIDERS



**22-100537 (NM-000-007)**  
Adjustment rod/strap - creased (for NM & NMX dry feeders)

**22-100537 (WF-000-023)**  
Adjustment rod/strap - creased (for WF, FM, & MX dry feeders)

**22-100180 (WF-000-006)**  
Panel divider (for WF dry feeders)

**22-100052**  
Wet/Dry Feeder Divider

## FEED TUBE HOLDER



**FA-00028**  
Flat Feed Tube Holder - with hardware (for Dry WF, MX, MXT, & BF feeders)



**FA-00027**  
Raised Feed Tube Holder - with hardware (for Dry WF, MX, MXT, & BF feeders)

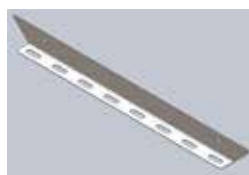


**FA-00037**  
Raised Feed Tube Holder - with hardware (for traditional 31" height wet/dry shelf CSW feeders)



**FA-00041**  
Raised Feed Tube Holder - with hardware (for XT 40" height wet/dry shelf CSF & CSW feeders)

## BOLT-ON FOOTPAD



- 22-104534** – Bolt-on Footpad for Central Shelf Feeders
- 22-104564** – Bolt-on Footpad for Wean-to-Finish Dry Feeders
- 22-104565** – Bolt-on Footpad for Boar, Max and Max Tall Feeders
- 22-104566** – Bolt-on Footpad for Nursery Dry Feeders
- 22-104567** – Bolt-on Footpad for Nursery Max Dry Feeders
- 22-104570** – Bolt-on Footpad for Central Shelf Nursery Feeders
- 22-104571** – Bolt-on Footpad for Single Sided Shelf Feeder
- 22-104575** – Bolt-on Footpad for Single Sided Nursery Dry Feeders
- 22-104576** – Bolt-on Footpad for Single Sided Wean-to-Finish Dry Feeders

## U-CHANNEL BRACKETS



- WF-000-024**  
2" x 2.13" ID x 2" leg U-channel brackets for WF Feeders
- WF-000-012**  
4" x 4" ID x 4" leg U-channel brackets for WF Feeders
- C-015-19-14G**  
19" U-channel, 2.5" wide x 4" legs for Central Shelf Feeder

## BACKING PLATE



- 20-104640**  
Flip-to-Clean Backing Plate for WF, MX, MXT Dry Feeders
- 20-106624**  
Flip-to-Clean Backing Plate for NM and NMX Dry Feeders

# FEED SYSTEM COMPONENTS

## Boot Unloaders



Certified 304 – SDI understands that time is money. That is why we were the first to develop all 304 stainless steel feed system components. Our heavy-duty feed system components have increased strength and longevity so you won't have to worry about your feed systems wearing out prematurely.



BA-00117 (BT-S-3CT)

### SINGLE BOOT UNLOADER

#### BA-00115 (BT-S-3)

Single out unloader body for 3" auger (baffle not included, comes with door and wingnuts)

#### BA-00117 (BT-S-3CT)

Single out unloader for 3" auger designed for smaller bearing cap (baffle not included, comes with door and wingnuts)

#### BA-00128 (BT-S-3.5)

Single out unloader for 3.5" auger (baffle not included, comes with door and wingnuts)



#### BT-ADP-001

Control Unit Adapter



#### BA-00062 (BT-S-T)

BT-S transfer and slide gate kit for single unloader



#### 22-102942 (BT-S.04)

12 GA 304 SS single baffle

### FEED LINE HOLDER

#### RBO-009

3" Feed Line Holder

#### 32-101504

3.5" Feed Line Holder



### Single Boot Unloader

Part #	Legacy	Description
BA-00115	BT-S-3	Single Boot Unloader for 3" Auger
BA-00117	BT-S-3CT	Single Boot Unloader for 3" Chore Time Auger
BA-00128	BT-S-3.5	Single Boot Unloader for 3.5" Auger
BA-00062	BT-S-T	BT-S Transfer and Slide Gate Kit for Single Unloader
22-102942	BT-S.04	BT-S Baffle for Single Unloader

## DOUBLE BOOT UNLOADER

### BA-00109 (BT-D-3)

Double out unloader body for 3" auger (baffle not included, comes with doors and wingnuts)

### BA-00111 (BT-D-3CT)

Double out unloader for 3" auger designed for small bearing cap (baffle not included, comes with door and wingnuts)

### BA-00125 (BT-D-3.5)

Double Boot unloader body for 3.5" auger (baffle not included, comes with door and wingnuts)



BA-00111 (BT-D-3CT)



### BA-00063 (BT-D-T)

BT-D transfer and slide gate for double unloader



### 22-102751 (BT-D-.04)

12 GA 304 SS double baffle

## Double Boot Unloader

Part #	Legacy	Description
BA-00109	BT-D-3	Double Boot Unloader for 3" Auger
BA-00111	BT-D-3CT	Double Boot Unloader for 3" Chore Time Auger
BA-00063	BT-D-T	BT-D Transfer and Slide Gate Kit for Double Unloader
22-102751	BT-D.04	BT-D Baffle for Double Unloader
BA-00125	BT-D-3.5	Double Boot Unloader Body for 3.5" Auger

# WATERING SOLUTIONS

## Nipple Bars



SDI's Nipple Bar is the practical solution for successfully weaning young piglets onto wet/dry feeders. Nipple Bars are fitted with quick-attach clamps for securing to gating. After pigs are started on wet/dry feed, the bars can be easily removed.

Available in different sizes—2 to 12 nipples per side on one side (single) or both (double).

### Features

- Edstrom nipples
- Quick-attach clamps work on  $\frac{5}{8}$ " –  $\frac{3}{4}$ " bar
- Top clip made to fit standard 1  $\frac{1}{2}$ " by 1  $\frac{1}{2}$ " gate top angle
- Other top clips available for gating

### Single Sided Nipple Bars

Part #	Description
WT-00146	NIPPLEBAR-SNGL2.E (2 nipples)
WT-00193	NIPPLEBAR-SNGL3.E (3 nipples)
WT-00128	NIPPLEBAR-SNGL4.E (4 nipples)
WT-00075	NIPPLEBAR-SNGL5.E (5 nipples)
WT-00199	NIPPLEBAR-SNGL6.E (6 nipples)
WT-00201	NIPPLEBAR-SNGL8.E (8 nipples)
WT-00203	NIPPLEBAR-SNGL10.E (10 nipples)
WT-00186	NIPPLEBAR-SNGL12.E (12 nipples)

### Double Sided Nipple Bars

Part #	Description
WT-00148	NIPPLEBAR-DBLE2.E (2 nipples per side)
WT-00167	NIPPLEBAR-DBLE3.E (3 nipples per side)
WT-00056	NIPPLEBAR-DBLE4.E (4 nipples per side)
WT-00155	NIPPLEBAR-DBLE5.E (5 nipples per side)
WT-00178	NIPPLEBAR-DBLE6.E (6 nipples per side)
WT-00055	NIPPLEBAR-DBLE8.E (8 nipples per side)
WT-00122	NIPPLEBAR-DBLE10.E (10 nipples per side)
WT-00131	NIPPLEBAR-DBLE12.E (12 nipples per side)

### NIPPLE BAR ACCESSORIES



**WT-00116**  
Bolt-on Nipple Bar  
Attach Clamp for  
 $\frac{1}{2}$ " to  $\frac{5}{8}$ " bar



**22-100177 (WC-012)**  
1  $\frac{1}{2}$ " by 1  $\frac{1}{2}$ " Top Angle  
Clip for Nipple Bars



**22-103723**  
Nipple Bar Hangers





# WATER CUP Nipple Drinkers



- For nursery and wean-to-finish applications
- Edstrom nipple
- 60" lead line
- Single 8" x 9" cup (single nipple) or double 8" x 14" cup (2 nipples)

## DOUBLE CUP NIPPLE DRINKER

**WT-00069 (WC-002.E)**

Double Nipple Water Cup with drip T-fitting

**WT-00073 (WC-002S.E)**

Double Nipple Water Cup with straight fitting



## SINGLE CUP NIPPLE DRINKER

**WT-00090 (WC-003.E)**

Single Nipple Water Cup with drip T-fitting

**WT-00077 (WC-003S.E)**

Single Nipple Water Cup with straight fitting



## INSTALLATION KITS

**WT-00228**

Hardware Kit for mounting  
water cups individually

**WT-00234**

Hardware Kit for mounting  
water cups back-to-back

# FLIP DRINKERS



This durable waterer has an easy flip-to-clean feature that allows the grower to quickly clean the waterer. The Flip Drinker can be mounted to the wall, as a single mount to the gate, or back-to-back on gating.

The Flip Drinker can be tipped and cleaned without the use of tools.

## Nipple Model

- Hardware included
- Edstrom nipples
- Optional clamps for round tube gating  $\frac{7}{8}$ ", 1", 1  $\frac{1}{2}$ "

**WT-00024 (WC-105-14W)**

Wall Mount single

**WT-00020 (WC-105-14GS)**

Gate Mount single

**WT-00022 (WC-105-14GD)**

Gate Mount back-to-back – set of 2



## Vacuum Valve Model

- Hardware included
- Vacuum valve sold separately
- Optional clamps for round tube gating  $\frac{7}{8}$ ", 1", 1  $\frac{1}{2}$ "

**WT-00052 (WC-100-14W)**

Wall Mount single

**WT-00061 (WC-100-14GS)**

Gate Mount single

**WT-00058 (WC-100-14GD)**

Gate Mount back-to-back – set of 2

# WATERING SOLUTIONS

## GESTATION DRINKER PIPES

(Nipples sold separately)

**WT-00042 (WLGEST18-1)**

18" Single Waterer

**WT-00150 (WLGEST24-1)**

24" Single Waterer

**WT-00102 (WLGEST30-1)**

30" Single Waterer

**WT-00244 (WLGEST36-1)**

36" Single Waterer



**WT-00259 (PGW-SNG-1)**

Gilt Drinker Pipe, single

**WT-00161 (PGW-SNG-2)**

Sow Drinker Pipe, single



**WT-00062 (WLGEST18-2)**

18" Double Water

**WT-00044 (WLGEST24-2)**

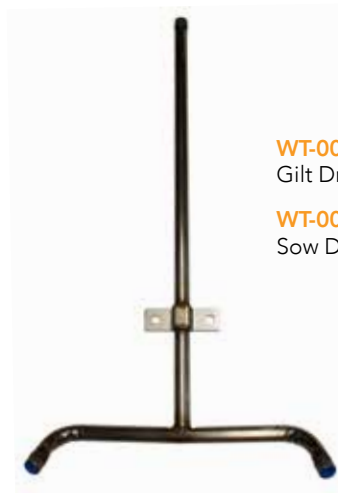
24" Double Water

**WT-00076 (WLGEST30-2)**

30" Double Water

**WT-00050 (WLGEST36-2)**

36" Double Water



**WT-00126 (PGW-DBL-1)**

Gilt Drinker Pipe, double

**WT-00125 (PGW-DBL-2)**

Sow Drinker Pipe, double

## FARROW DRINKER PIPES

### Sow/Piglet Combo Drinker Pipe

(Nipples sold separately)



**WT-00151 (WL-L00)**

Sow/Piglet Combo, left hand

**WT-00157 (WL-R00)**

Sow/Piglet Combo, right hand



**WT-00101 (WL-R01)**

Sow/Piglet Combo, right hand angled  
sow nipple at 45 degrees

**WT-00100 (WL-L01)**

Sow/Piglet Combo, left hand angled  
sow nipple at 45 degrees

( Other lengths available)

## SWINGING WATER PIPE

(Pipe only, nipples sold separately)

**WT-00164 (WL18-H01)**

18" Swinging Water Pipe  
Double/ "Y" type, 304 SS  
Pipe only – nipples sold separately

**WT-00149 (WL24-H01)**

24" Swinging Water Pipe  
Double/ "Y" type, 304 SS  
Pipe only – nipples sold separately

**WT-00264 (WL30-H01)**

30" Swinging Water Pipe  
Double/ "Y" type, 304 SS  
Pipe only – nipples sold separately

**WT-00233 (WL36-H01)**

36" Swinging Water Pipe  
Double/ "Y" type, 304 SS  
Pipe only – nipples sold separately





## FARROWING WATER PANS

### WT-00109 (WC-006.E)

5" x 6" Water Pan, 90 degree elbow, 48" lead line, Edstrom nipple

### WT-00243 (WC-006NL.E)

5" x 6" Water Pan with 90 degrees elbow, Edstrom nipple, no lead line

### WT-00113 (WC-006FC.E)

5" x 6" Water Pan with full coupler, Edstrom nipple, no lead line



### WT-00112 (CO1-WC-006.FC)

5" x 6" Water Pan with full coupler, no nipple, no lead line

## Edstrom NIPPLES



### FD05

Edstrom piglet nipple



### FD06

Edstrom wet feeding nipple



### PP-00007 (NPL-H)

Edstrom hog nipple

# PIT FAN TRANSITIONS



## Features

- Sturdy stainless steel welded transitions
- Constructed of 18 and 12 gauge 304 stainless steel
- Designed to Iowa DNR standards
- Top and side adjustable fan brackets
- Key hole-shaped install holes on top flange for easier installation
- SDI also makes Transitions in other sizes, variations and are compatible with other brands of fans



FAN TRANSITION MODEL 800

## Transition Model 300

Part #	Legacy	Description
BA-00216	TRS-300-14AP	Model 300 Transition, fits 14" AP fan
BA-00210	TRS-300-18AP	Model 300 Transition, fits 18" AP fan
BA-00002	TRS-300-24AP	Model 300 Transition, fits 24" AP fan
BA-00218	TRS-300-20MFSYS1	Model 300 Transition, fits 20" Multifan system 1 fan
BA-00065	TRS-300-24MFSYS1	Model 300 Transition, fits 24" Multifan system 1 fan
BA-00230	TRS-300-24MFSYS4	Model 300 Transition, fits 24" Multifan system 4 fan
BA-00222	TRS-300-21RAYPMC	Model 300 Transition, fits 21" VAL-CO power miser fan
BA-00223	TRS-300-24RAYPMC	Model 300 Transition, fits 24" VAL-CO power miser fan



## Transition Model 600



Part #	Legacy	Description
BA-00219	TRS-600-14AP	Model 600 Transition, fits 14" AP fan
BA-00220	TRS-600-18AP	Model 600 Transition, fits 18" AP fan
BA-00226	TRS-600-24AP	Model 600 Transition, fits 24" AP fan
BA-00206	TRS-600-24MFSYS1	Model 600 Transition, fits 24" Multifan system 1 fan
BA-00231	TRS-600-24MFSYS4	Model 600 Transition, fits 24" Multifan system 4 fan
BA-00075	TRS-600-21RAYPMC	Model 600 Transition, fits 21" VAL-CO power miser fan
BA-00225	TRS-600-24RAYPMC	Model 600 Transition, fits 24" VAL-CO power miser fan

Compatible with AP, Multifan, and Val-Co Fans



## Transition Model 800

Part #	Legacy	Description
BA-00237	TRS-800-14AP	Model 800 Transition, fits 14" AP fan
BA-00241	TRS-800-18AP	Model 800 Transition, fits 18" AP fan
BA-00078	TRS-800-24AP	Model 800 Transition, fits 24" AP fan
BA-00208	TRS-800-21RAYPMC	Model 800 Transition, fits 21" VAL-CO power miser fan
BA-00211	TRS-800-24RAYPMC	Model 800 Transition, fits 24" VAL-CO power miser fan



## Transition Model 700

Part #	Legacy	Description
BA-00048	TRS-700-24AP	Model 700 Transition, fits 24" AP fan
BA-00250	TRS-700-24AERO	Model 700 Transition, fits 24" Aerotech fan



## Transition Model 710

Part #	Legacy	Description
BA-00171	TRS-710-24CT	Model 710 Transition, fits 24" CHORE-TIME fan

# CURTAIN ACCESSORIES

## CURTAIN POCKETS

These stainless steel curtain pockets will withstand all that mother nature can throw at them. Available in 6 sizes, we have options to best fit your needs. Sold as a pair.



### Curtain Pockets



Part #	Legacy	Description
BA-00032	CPT48-01	18" W X 48" H, Curtain Pockets (pair)
BA-00033	CPT66-01	18" W X 66" H, Curtain Pockets (pair)
BA-00034	CPT78-01	18" W X 78" H, Curtain Pockets (pair)
BA-00035	CPT84-01	18" W X 84" H, Curtain Pockets (pair)
BA-00036	CPT96-01	18" W X 96" H, Curtain Pockets (pair)
BA-00037	CPT108-01	18" W X 108" H, Curtain Pockets (pair)

## 304 Stainless Steel Curtain Retaining Bar

Part #	Legacy	Description
22-105910	CHB-011	46" length Curtain Bracket; 1" wide 304 SS
22-103780	CHB-012	88" length Curtain Bracket; 1.25" wide 304 SS
22-105034	CHB-013	73" length Curtain Bracket; 1.25" wide 304 SS

(Other sizes available)

**CHB-011**  
46" length

**CHB-012**  
88" length

**CHB-013**  
73" length



## 304 Stainless Steel Curtain Brackets

Part #	Legacy	Description
22-103443	CHB-004	Curtain Bracket; 3 holes-2T,1L
22-103923	CHB-007	Curtain Bracket; 3 holes-2T, 1L (plus 0.375" hole lower) extra long; 7 GA 304 SS
22-102498	CHB-008	Curtain Bracket; two 0.40" mounting holes 7 GA 304 SS



**22-103443**  
(CHB-004)



**22-103923**  
(CHB-007)



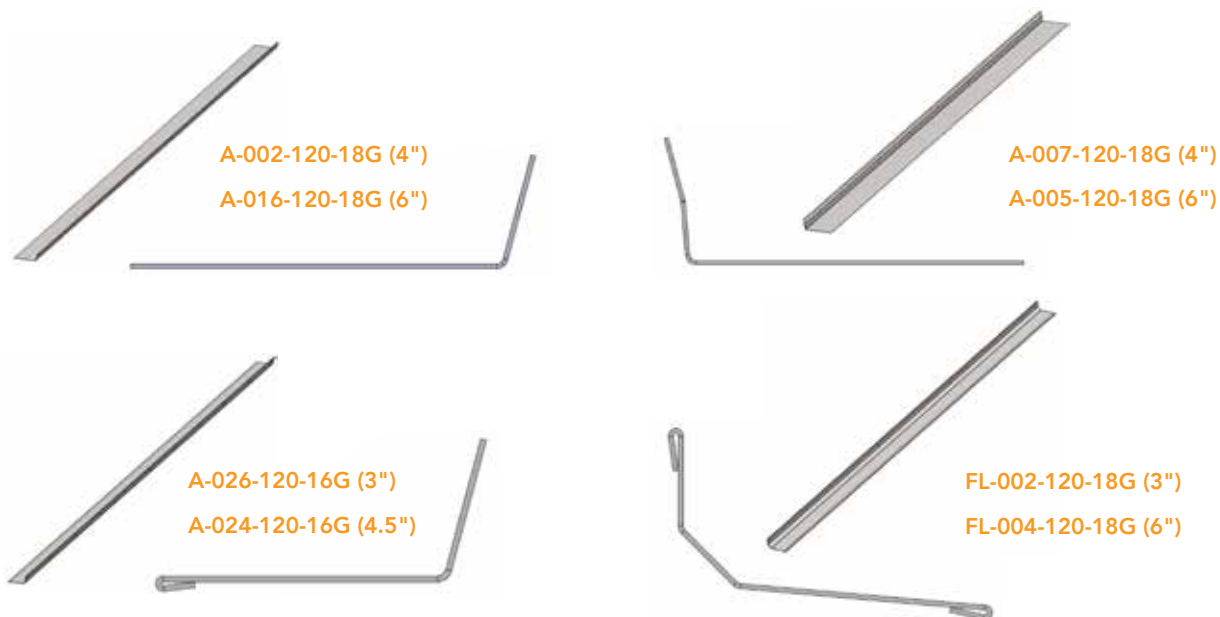
**22-102498**  
(CHB-008)



## TRIM

### COVING

SDI Coving is manufactured in 10' lengths and can be manufactured as either 16 gauge or 18 gauge 304 stainless steel.



### EXPANSION JOINT COVER

SDI Expansion Joint Covers are manufactured in 10' lengths and can be manufactured as either 16 gauge or 18 gauge 304 stainless steel.



### CORNER GUARDS



- A-019-072-20G**  
1.5" X 1.5" Corner Guard, 72" length; 20 GA 304 SS, with 0.125" holes
- A-011-048-18G**  
1.5" X 1.5" Corner Guard, 48" length; 18 GA 304 SS, with 0.1875" holes
- A-014-096-18G**  
3" X 3" Corner Guard, 96" length; 18 GA 304 SS, with 0.1875" holes



### Z-CHANNELS

Z-Channels available in multiple variations.

## DRAINS &amp; GATES

**BA-00163**

14" square Drain Box with opening on both sides for Bolt-on Drain Track, 3.5" sewer access hole on one side, 18" deep

**BA-00213**

48" bolt together Drain Track sections that attach to the Drain Box; also available in 96" lengths



*Enlarged to show detail*



## SHOP FLOOR DRAINS



This rugged drain is perfect for your shop or garage. With only a narrow slot visible at the surface, this tidy drain keeps your shop spic-and-span.

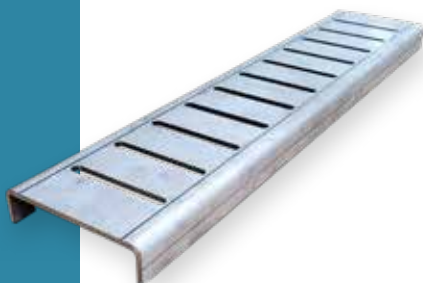
The drain tracks carry away snow and dirt out of sight below the floor. Each track empties into the drain box, complete with a filter bucket easily accessed for cleaning.

**BA-00144**

14" square Drain Box with a 3.5" sewer access hole on the BOTTOM, box is 12" deep

**BA-00140**

14" square Drain Box with a 3.5" sewer access hole on the SIDE, box is 12" deep

**BA-00144**  
Side profile

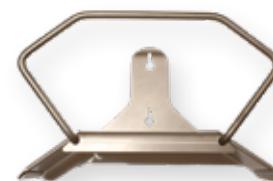
## STAINLESS STEEL DRAIN COVERS

Comes in lengths of 24", 48", and 60"  
Depth of 1.25"  
Widths of 4.5", 5.25", 6", and 8"

This stainless steel floor Drain Cover not only looks great, it is also durable. The cover, constructed of 7 gauge stainless steel, can handle the heaviest loads.

STAINLESS STEEL  
HOSE HANGER

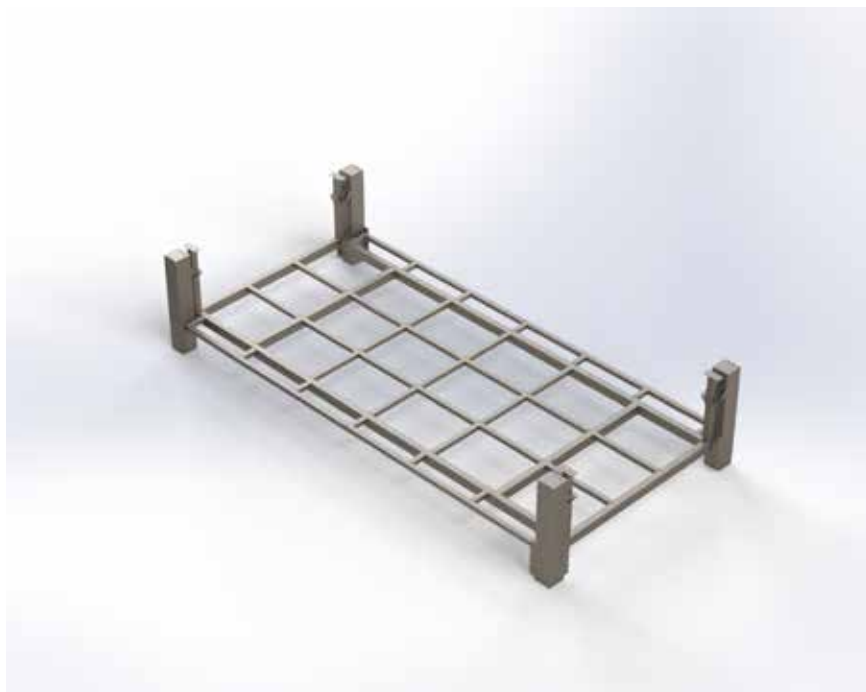
Made from 12 and 16 gauge 304 stainless steel, this Hose Hanger will stand up to any abuse and wear.

**BA-00145**

# SCALE FRAMES

## AVAILABLE CUSTOM SIZING

SDI offers custom-sized scale frames. We will manufacture the scale to your specifications. Stainless steel and mild steel options are available. Call SDI for more details!



# WIRE MESH



## POULTRY NETTING

Stainless steel Poultry Netting | full rolls only (UV-resistant)



### Stainless Steel Poultry Netting | Full Rolls Only

Part #	Legacy	Description
800-0001	MESH-HEX1X20-1X200	1' wide roll of poultry netting 200' long 20 GA 304 SS
800-0002	MESH-HEX1X20-2X200	2' wide roll of poultry netting 200' long 20 GA 304 SS
800-0003	MESH-HEX1X20-4X200	4' wide roll of poultry netting 200' long 20 GA 304 SS
800-0004	MESH-HEX1X20-5X200	5' wide roll of poultry netting 200' long 20 GA 304 SS
800-0005	MESH-HEX1X20-6X200	6' wide roll of poultry netting 200' long 20 GA 304 SS
800-0006	MESH-HEX1X20-7X200	7' wide roll of poultry netting 200' long 20 GA 304 SS

# HARDWARE



### Spinning J-Hooks (0.25" J-Hook with screw plate)

Part #	Legacy	Description
BA-00269	JHS-3X1.5	Spinning J-Hook Bracket 3" Length ID X 1.5"
BA-00304	JHS-5X1.5	Spinning J-Hook Bracket 5" Length ID X 1.5"
BA-00305	JHS-5.5X2.5	Spinning J-Hook Bracket 5.5" Length ID X 2.5"
BA-00277	JHS-6.5X1.5	Spinning J-Hook Bracket 6.5" Length ID X 1.5"
BA-00306	JHS-6.5X2.5	Spinning J-Hook Bracket 6" Length ID X 1.5"
BA-00270	JHS-7X2.5	Spinning J-Hook Bracket 7" Length ID X 2.5"
BA-00296	JHS-7.875X4.5	Spinning J-Hook Bracket 7.875" Length ID X 4.5"
BA-00315	JHS-9.5X1.125	Spinning J-Hook Bracket 9.5" Length ID X 1.125"
BA-00283	JHS-7.5X1.5	Spinning J-Hook Bracket 7.5" Length ID X 1.5"

\*Custom sizes available

# ANCHORS & WIRE PRODUCTS

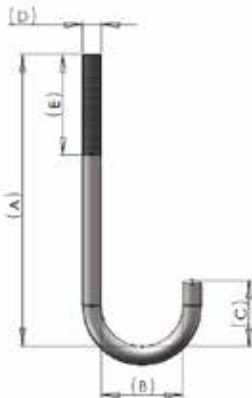


T-bolts-strap thickness is 0.1875" x 1"

## T-Bolts

Part #	Legacy	A-Bolt Shank	B-Bolt Length	C-Strap Length
BA-00043	TBS-018	0.3125"	1.625"	2"
BA-00044	TBS-026	0.375"	1.625"	2.5"
BA-00045	TBS-032	0.375"	1.625"	2.75"
TBS-008	TBS-008	0.375"	5"	6"
TBS-005	TBS-005	0.375"	5.5"	6"
TBS-002	TBS-002	0.375"	6"	6"
TBS-001	TBS-001	0.5"	5"	6"
TBS-019	TBS-019	0.5"	5.25"	6"
BA-00330	TBS-006	0.5"	5.5"	6"
TBS-004	TBS-004	0.5"	6"	6"

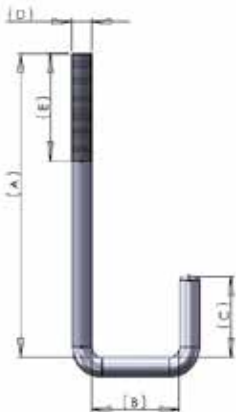
Custom sizes available  
Contact Sales for pricing



## Round J-Bolts

Part #	A	B	C	D	E
JB1R-.375x5.715-1	5.715"	0.75"	0.815"	0.375	2
JB1R-.375x6.5-1	6.5"	0.563"	1.25"	0.375	4.125
JB1R-.375x7.25-1	7.25"	0.75"	1"	0.375	2

Custom sizes available  
Contact Sales for pricing



## Square J-Bolts

Part #	A	B	C	D	E
JB1S-.313x7.5-1	7.5"	1.875"	1"	.313"	3"
JB1S-.313x9.05-1	9.05"	1.25"	.92"	.313"	4"
JB1S-.375x7.75-1	7.75"	2"	1.25"	.375"	4"

Custom sizes available  
Contact Sales for pricing



# NURSERY FLOORING ACCESSORIES



Designed to be placed under plastic nursery flooring so that J-Bolts can hook on the bottom of its center section.

## Nursery Flooring Spanner Bar

Part #	Description
SB-005	Spanner Bar, 24" OC
SB-008	Spanner Bar, 18" OC



## Nursery Flooring Strap

Part #	Description
NG-000-037-22	22" Flooring Strap Used with NG-000-031, 0.1875" 304 SS
NG-000-037-26	26" Flooring Strap Used with NG-000-031, 0.1875" 304 SS
NG-000-037-28	28" Flooring Strap Used with NG-000-031, 0.1875" 304 SS
NG-000-037-30	30" Flooring Strap Used with NG-000-031, 0.1875" 304 SS
NG-000-037-40	40" Flooring Strap Used with NG-000-031, 0.1875" 304 SS



Similar to J-Bolt, Nursery Bolts anchor flooring down with a square bottom hole. This allows a strap to slide through multiple Nursery Bolts. If one becomes loose, the others prevent it from falling into the pit.



## Nursery Flooring Bolt

Part #	A	B	C	D	E
NG-000-031	.313"	5.75"	1.5"	3.5"	3.75"

# POSTS & BRACKETS



## Gate Posts (GPT)

Part #	Dimensions
GPT-06.1530- (insert letter preference)	1.5" X 30"
GPT-06.230- (insert letter preference)	2" X 30"
GPT-06.232- (insert letter preference)	2" X 32"
GPT-06.238- (insert letter preference)	2" X 38"
GPT-06.240- (insert letter preference)	2" X 40"

- 6" x 6" 10 gauge stainless steel base plate
- Base holes are  $\frac{3}{8}$ " x  $\frac{3}{8}$ " slots
- 14 gauge stainless steel posts and channels

For example: To order 2" by 30" Post, style "J" use the following part number **GPT-06.230-J**

## Wall Bracket, with Loops



Part #	Dimensions
GPT-00.1530-WB	1.5" X 30"
GPT-00.230-WB	2" X 30"
GPT-00.232-WB	2" X 32"
GPT-00.238-WB	2" X 38"
GPT-00.240-WB	2" X 40"

## Gate End, with Loops



Part #	Dimensions
GPT-00.1530-GE	1.5" X 30"
GPT-00.230-GE	2" X 30"
GPT-00.232-GE	2" X 32"
GPT-00.238-GE	2" X 38"
GPT-00.240-GE	2" X 40"

## U-Channel Bracket



Part #	Dimensions
GPT-00.1530-1	1.5" X 30"
GPT-00.230-1	2" X 30"
GPT-00.232-1	2" X 32"
GPT-00.238-1	2" X 38"
GPT-00.240-1	2" X 40"

# FINISHER GATING OPTIONS

## Mild Steel Gating

### Standard Gating

- Heavier, more robust gate
- Constructed with  $\frac{5}{8}$ " round middle bars and  $\frac{7}{8}$ " round bottom bar

Description	
Top Angle	$\frac{3}{16}$ " x $1\frac{1}{2}$ " x $1\frac{1}{2}$ "
Middle Bar (7)	$\frac{5}{8}$ " round bar
Bottom Bar	$\frac{7}{8}$ " round bar
Gate Straps	$\frac{1}{4}$ " mild steel
Posts & Feet	304 stainless steel or mild steel available
Heights	32", 34", and 36"
Hardware	$\frac{1}{2}$ " hardware

### Value Gating

- Excellent quality at value pricing
- Manufactured with  $\frac{1}{2}$ " round middle bars and  $\frac{3}{4}$ " round bottom bar

Description	
Top Angle	$\frac{3}{16}$ " x $1\frac{1}{2}$ " x $1\frac{1}{2}$ "
Middle Bar (7)	$\frac{1}{2}$ " round bar
Bottom Bar	$\frac{3}{4}$ " round bar
Gate Straps	$\frac{1}{4}$ " mild steel
Posts & Feet	304 stainless steel or mild steel available
Heights	32", 34", and 36"
Hardware	$\frac{1}{2}$ " hardware

### Heavy Gating

- Heaviest, most durable gating
- Constructed with  $\frac{5}{8}$ " round middle bars,  $\frac{7}{8}$ " bottom bar, and  $\frac{3}{8}$ " end straps

Description	
Top Angle	$\frac{3}{16}$ " x $1\frac{1}{2}$ " x $1\frac{1}{2}$ "
Middle Bar (7)	$\frac{5}{8}$ " round bar
Bottom Bar	$\frac{7}{8}$ " round bar
Gate End Straps	$\frac{3}{8}$ " mild steel
Gate Straps	$\frac{1}{4}$ " mild steel
Posts & Feet	304 stainless steel or mild steel available
Heights	32", 34", and 36"
Hardware	$\frac{1}{2}$ " hardware

### CUSTOM GATING PACKAGES

SDI produces beautiful stainless steel gating packages for new construction or retrofit/remodel applications. We design to meet your needs.

Contact your local dealer for more information.

## NEW GATING OPTIONS

### Steel Gating

Gate rods pass through straps for strength and durability (not butt welded)

Posts and feet made of 304 stainless steel or mild steel available

Stainless steel or zinc hardware available

Powder coated, unfinished, or galvanized finishes available





SDI offers mild steel gating in powder coat, raw, and galvanized options.



## LEGS/FOOTPLATES



**22-103415 (FPS-300)**  
(Fits  $\frac{3}{8}$ " floor anchors)  
"Universal" 2-piece gate  
leg  $\frac{1}{4}$ " 304 SS (Does not  
include hardware)



**22-103419 (FPS-350)**  
(Fits  $\frac{1}{2}$ " floor anchors)  
"Universal" 2-piece gate  
leg  $\frac{1}{4}$ " 304 SS (Does not  
include hardware)



**CF-00175 (FPS-001)**  
Short gate leg,  $\frac{1}{4}$ "  
304 SS



**CF-00176 (FPS-002)**  
Tall gate leg (32") with  
gussets  $\frac{1}{4}$ " 304 SS



**22-103414 (FPS-007)**  
"L" bracket gate leg,  $\frac{1}{4}$ "  
304 SS



**CF-00688**  
5"x 17" In-gate Footpad  
 $\frac{1}{4}$ " 304 SS base



**CF-01634**  
2"x 17" Footpad  
 $\frac{3}{8}$ " mild steel base



**CF-01633**  
2" x 17" Footpad  
 $\frac{1}{4}$ " 304 SS base



**CF-01058**  
5"x 17" Footpad  
 $\frac{1}{2}$ " mild steel base



**CF-00250**  
5" x 17" Footpad  
 $\frac{1}{4}$ " 304 SS base



**CF-01631**  
2" x 17" T-post  
 $\frac{3}{8}$ " mild steel base



**CF-01630**  
2" x 17" T-post  
 $\frac{1}{4}$ " 304 SS base



**CF-00626**  
5" x 17" T-post  
 $\frac{1}{2}$ " mild steel base



**CF-00276**  
5" x 17" T-post  
 $\frac{1}{4}$ " 304 SS base



**CF-00648**  
2" x 2" Post  
 $\frac{1}{2}$ " x 5" x 17" mild steel base



**CF-00527**  
2" x 2" Post  
 $\frac{1}{4}$ " x 5" x 17" 304 SS base



**CF-00815**  
Flip to clean bracket  
 $\frac{1}{4}$ " 304 SS



**CF-00420**  
Wall Bracket  
 $\frac{1}{4}$ " 304 SS



## HANDLES

### TOP HANDLE

**HD-002**  
For 1  $\frac{3}{8}$ " gate plank

**HD-003**  
For 2" gate plank

## NURSERY GATING

### Mild Steel



SDI's mild steel gating works well for new construction and remodel projects. SDI will design the layout to meet your needs.

#### Features

- Top Angle –  $\frac{3}{4}$ " x  $\frac{3}{4}$ " x  $\frac{1}{8}$ "
- Middle Bar –  $\frac{3}{8}$ " round bar
- Bottom Bar –  $\frac{1}{2}$ " round bar
- Straps – 7 gauge
- Finish – Raw, powder coated, or galvanized
- Hardware –  $\frac{3}{8}$ "
- Height – 28", 30"





# STAINLESS STEEL NURSERY GATING

SDI produces beautiful stainless steel gating packages for your new construction or remodel projects. SDI will design the layout to meet your needs.

## Features

- All materials – 304 SS
- Top Bar – 1 ½" round 16 gauge 304 SS tube
- Middle Bar (7) – 5/8" round – 16 gauge 304 SS tube
- Gate Straps – 10 gauge 304 SS
- T-Post – 7 gauge 304 SS base and upright
- Square Posts – 7 gauge 304 SS base, 2" x 2" 7 gauge square tube
- Height – 30"
- Hardware – 3/8"



# STANCHIONS



## STANCHIONS AND STANCHION GATING

Built with durability and ease of construction in mind, SDI stanchions are made with top grade materials and SDI craftsmanship. SDI stanchions can be powder coated, raw, or galvanized.

Constructed with quality materials, the top angle of the SDI stanchion is made with 1 1/2" x 1 1/2" x 3/16" top angle. End straps are made with 1/4" flat straps. The middle bars are made of 1/2" solid rod and the bottom bar made of 3/4" solid rod.



## GESTATION GATING

Height – 40"  
Top angle – 3/16" x 1 1/2" x 1 1/2"  
Middle (9) – 1/2" round bar  
Bottom – 3/4" round bar  
Gate straps – 1/4"  
Hardware – 1/2"



## FEED TUBES

Feed tubes can be bolted on at the height that maximizes feed efficiency. Feed tubes can be powder coated, raw, or galvanized.

Stanchions bolt to the floor anchor straps with 1/2" hardware. Floor straps made with 1 1/2" wide, 7 gauge 304 stainless steel.



## TROUGHING

Feed troughs are manufactured with 304 stainless steel. Trough is available in 18 gauge or 16 gauge. Several profiles available.



# GESTATION STALL

Built with durability and ease of construction in mind, SDI gestation stalls stand above other manufacturers' due to the stronger top and bottom angles when competitors use round bars.

Constructed of quality materials, the SDI gestation stall includes 2" by 2" 7 gauge top angle to provide structure. SDI uses 5 – 1/2" rods in the construction and the bottom angle is made of 1 1/2" by 1 1/2" by 3/16" steel.

SDI gestation stalls come in 22" or 24" on center design and stall lengths of 84" (7') or 90" (7 1/2').

\*Stainless steel gestation stalls available  
Contact Sales for more information



## GESTATION STALL DOORS

Ambidextrous front and back doors attach with drop pins making it easy to move sows when needed.

Front doors feature 1/4" mild steel straps, rods are 1/2" mild steel, and front doors are made with a drop pin guard to prevent sows from escaping.

Rear door design incorporates 1/4" mild straps with 1/2" round bars. The design allows for rear doors to be drop pinned open, ideal for an open pen setting.

## FLOOR STRAPS

SDI Gestation Stalls are bolted to the floor with 1/2" stainless steel hardware. Floor straps, made with 1 1/2" wide, 7 gauge 304 stainless steel.



## FEED TUBES

Feed tubes bolted to G-stall sides. Feed tubes can be powder coated, raw, or galvanized.



## TROUGHING

Feed troughs are manufactured with 304 stainless steel. Trough is available in 18 gauge or 16 gauge. Several profiles available.

# SDI STANDARD CRATE



SDI Farrowing Crates promote health and safety for the sow and litter. The SDI Standard Crate was designed with an independent crush bar and a Contoured Finger Bar that allows more space for the sow to lay down during feeding.

## FRAME

SDI uses  $\frac{7}{8}$ " solid rod in the manufacturing of the side, front, and rear gates, making it one of the most durable farrowing crates on the market. The front and back doors mount to the floor allowing for a sturdier crate and for easier installation.



## CONTOURED FINGER BARS

Allow the sow more comfort and space to lay down when nursing with the Contoured Finger Bar while allowing more safety for the litter. Fingers are welded onto the contoured finger bar.

## RUMP GATE

Rump plate available in various material options. The rump bar is bolted on the rump gate, the  $\frac{7}{8}$ " solid bar promotes safety of the litter when the sow lies down.



## ANTI-CRUSH BAR

The independent Anti-Crush Bar, a  $\frac{7}{8}$ " solid round bar, provides the right amount of resistance to allow the sow to lay down safely when feeding.

## ACCESSORIES

- Sow feeder and waterer
- Creep panels (304 SS and mild steel)
- C-channels (304 SS and mild steel)
- Sow card holder

## SOW FEEDERS

Head gates are manufactured to mount SDI's industry leading sow feeders.





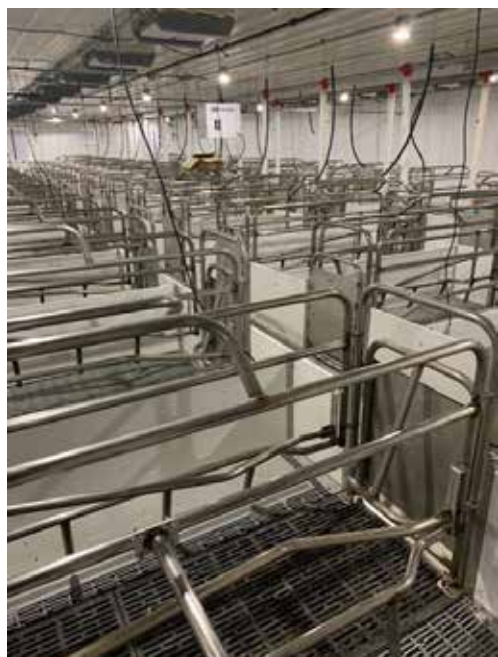
# SDI STAINLESS STEEL CRATE

## Farrowing Crate sizes

- 84" Standard Farrowing Crate
- 90" Standard Farrowing Crate
- 96" Standard Farrowing Crate

## Features

- Crate made with 1 ¼" – 16 gauge 304 stainless steel
- Anti-Crush Bars prevent sows from laying on piglets
- Flip-out Feeder Latch: Top latch on head-gate releases to flip feeder out and down for easy cleaning.
- Rump Bar provides safety to pigs when sow lays down.
- Drop-slide Latch Plate is easy operation to open and close the front and rear gates



## ACCESSORIES

- Sow feeder and waterer
- Creep panels (304 SS and mild steel)
- C-channels (304 SS and mild steel)
- Sow card holder



Enlarged to show detail



## CARCASS BIN



The SDI Carcass Bin is made from 7 gauge and 10 gauge mild steel and is one of the most heavy duty on the market.

### Carcass Bin

- Capacity is 39 ¼ cubic feet
- Lashing D-ring loop thickness is ¾" and holds up to 9,120 lbs
- Powder coated black



MSC-00239

## CARCASS BOX CRANE

The SDI Carcass Box Crane is ideal for lifting carcass into Carcass Bins.

- Crane mounts to concrete wall with anchors.
- 24" handle allows caretaker to rotate the crane 360 degrees.
- Winch capacity is 1,200 lbs
- Inner tube is 3 ½" by 3 ½" by ¼" mild steel round tube
- Dead box boom is made of 1 ¼" by 1 ¼" 11 gauge mild steel
- Powder coated black



MSC-00265

# PRODUCT INDEX

## B

### BOAR FEEDERS

Dry Boar Feeders	
BF Series	
Double Sided .....	12
Single Sided .....	12

## C

### CARCASS BIN

Carcass Box Crane .....	40
-------------------------	----

### CURTAIN ACCESSORIES

Curtain Brackets .....	24
Curtain Pockets .....	24
Curtain Retaining Bar .....	24

## D

### DRAINS & WASTEWATER PRODUCTS

Shop Floor Drains .....	26
Stainless Steel Drain Covers .....	26
Stainless Steel Hose Hanger .....	26

## F

### FARROWING CRATE

SDI Stainless Steel Crate .....	39
SDI Standard Crate	
Anti-Crush Bar .....	38, 39
Contoured Finger Bars .....	38
Frame .....	38
Rump Gate .....	38, 39
Sow Feeders .....	38, 39

### FEEDER ACCESSORIES

Adjustment Rod/Strap and Dividers .....	13
Backing Plate .....	13
Bolt-on Footpad .....	13
Feed Tube Holder .....	13
Feeder Adjustments .....	13
U-Channel Brackets .....	13

## FEED SYSTEM COMPONENTS

Boot Unloaders .....	14
Double Boot Unloader .....	15
Feed Line Holder .....	14
Single Boot Unloader .....	14

## G

### GATING

Finisher Gating Options	
Mild Steel Gating	
Heavy Gating .....	32
Standard Gating .....	32
Value Gating .....	32
Handles	
Top Handle .....	33
Legs/Footplates .....	33
Nursery Gating	
Mild Steel .....	34, 35
Stainless Steel Nursery Gating .....	35

### GESTATION STALL

Feed Tubes .....	37
Floor Straps .....	37
Gestation Stall Doors .....	37
Troughing .....	37

## H

### HARDWARE

Anchors & Wire Products	
Round J-Bolts .....	29
Square J-Bolts .....	29
T-Bolts .....	29
Spinning J-Hooks .....	28

## N

### NURSERY FEEDERS

Dry Nursery Feeders	
NM Series .....	3
Dry Nursery MAX Feeders	
NMX Series .....	4
Wet/Dry Nursery Shelf Feeder	
CSN Series .....	5

**NURSERY FLOORING ACCESSORIES**

Bolt .....	30
Spanner Bar .....	30
Strap .....	30

**P****PIT FAN TRANSITIONS**

Transition Model 300 .....	22
Transition Model 600 .....	22
Transition Model 700 .....	23
Transition Model 710 .....	23
Transition Model 800 .....	23

**POSTS & BRACKETS**

Gate End, with Loops .....	31
Gate Posts .....	31
U-Channel Bracket .....	31
Wall Bracket, with Loops .....	31

**S****SCALE FRAMES** 27**SOW FEEDERS**

SF Series .....	11
-----------------	----

**STANCHIONS**

Feed Tubes .....	36
Gestation Gating .....	36
Troughing .....	36

**T****TRIM & CORNER GUARDS**

Corner Guards .....	25
Coving .....	25
Expansion Joint Cover .....	25
Z-Channels .....	25

**W****WATERING SOLUTIONS**

Edstrom nipple .....	21
Farrow Drinker Pipes .....	20
Farrowing Water Pans .....	21
Flip Drinkers .....	18

Gestation Drinker Pipes .....	19
Nipple Bars	
Accessories .....	16
Double Sided Nipple Bars .....	16
Single Sided Nipple Bars .....	16
Swinging Water Pipe .....	20
Water Cup	
Nipple Drinkers	
Double Cup Nipple Drinker .....	17
Installation Kits .....	17
Single Cup Nipple Drinker .....	17

**WEAN-TO-FINISH**

Dry Wean-to-Finish Feeders	
WF Series .....	6
Dry Wean-to-Finish Feeder, with Solid Panel	
Dividers .....	6
Dry Wean-to-Finish Feeder, with V-Guard	
Dividers .....	6
Dry Wean-to-Finish Max Feeders	
MX Series	
Dry Wean-to-Finish MAX, with Solid	
Dividers .....	7
Dry Wean-to-Finish MAX, with V-Guard	
Dividers .....	7
Dry Wean-to-Finish MAX TALL Feeders	
MXT Series	
Dry Wean-to-Finish TALL MAX, with Solid	
Panel Dividers .....	8
Dry Wean-to-Finish TALL MAX, with Solid	
V-Guard Dividers .....	8
Wet/Dry Shut-off Feeder	
Optional on CSW XT Series .....	10
Wet/Dry Wean-to-Finish Shelf Feeder	
CSW Series	
Wet/Dry Wean-to-Finish Shelf Feeder .....	9
CSW XT Series	
Wet/Dry Wean-to-Finish Shelf Feeder .....	9

**WIRE MESH**

Poultry Netting .....	28
-----------------------	----





Mitchell, South Dakota

SD Industries is proud to be the premier manufacturer of stainless steel and mild steel hog equipment. Our team boasts decades of experience in the hog and manufacturing industry. A network of dealers across the US and internationally connect you with our superior products built in the USA with precision engineering and supported with rapid personal service. SDI maintains a commitment to the highest environmental, quality and production standards. The SDI brand stands for hog equipment of high quality, innovation, and user-friendly features.

**Hog tested. Farmer approved.**



Alexandria, South Dakota



**1 (855) 306-6354**

42204 245th Street  
Alexandria, SD 57311

[www.sdimfg.com](http://www.sdimfg.com)

Many of our products are available in other sizes and gauges not shown in this catalog. Contact your local dealer using our online dealer locator at: [sdimfg.com/dealer-locator](http://sdimfg.com/dealer-locator) ©2023 SD Industries.